

Material Witness

Matt Lynch · Curtis Goldstein

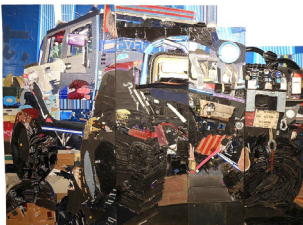
The Gallery at The Summit,
A Dolce Hotel by Wyndham



Curtis Goldstein
Hurricane, 2014
collage of junk mail, and packaging
53 x 84 inches



Curtis Goldstein
Aftermath, 2013
collage of junk mail, packaging,
and broken furniture
53 x 84 inches



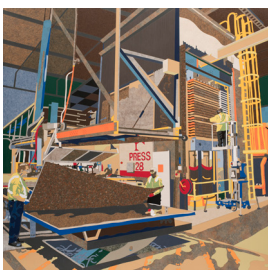
Curtis Goldstein
Humvee, 2013
collage of trash, screws, staples,
glue
96 x 168 inches



Curtis Goldstein
Fire At Sea (After Turner), 2014
collage of magazines and
packaging
73 x 92 inches



Matt Lynch · Curtis Goldstein
P&G, 2018
laser-cut Formica high-pressure
laminates on wood
support
90 x 90 inches
1 out of a series of 10 from the
Work Surface series



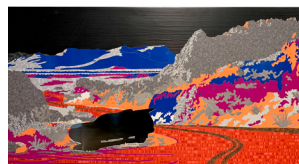
Matt Lynch · Curtis Goldstein
Formica, 2015
laser-cut Formica high-pressure
laminates on wood
support
90 x 90 inches
1 out of a series of 10 from the
Work Surface series
courtesy: Formica Corp



Matt Lynch · Curtis Goldstein
Rhinegeist, 2018
laser-cut Formica high-pressure
laminates on wood support
90 x 90 inches
1 out of a series of 10 from the
Work Surface series



Matt Lynch · Curtis Goldstein
Upper Paleolithic Kitchen Cabinet,
2019
upper kitchen cabinet, laser-cut
Formica high-pressure laminates
on wood
36 x 24 x 12 inches



Matt Lynch · Curtis Goldstein
Tacoma 2, 2019
laser-cut Formica high-pressure
laminates on wood, mirror
26 x 48 inches



Matt Lynch · Curtis Goldstein
Tacoma 1, 2019
laminates mosaics, laser-cut
Formica high-pressure laminates
on wood, halftone photograph
22 x 40 inches
courtesy: private collection



Matt Lynch
Cinderblock Mobile Home,
2000/2019
concrete, antenna, hardware,
flag
9 + x 36 x 8 inches



Matt Lynch
Block Radio, 2011
concrete
24 x 16 x 8 inches
AP, edition of 3 + 1 AP



Matt Lynch
Pac Man, 2001
painted concrete
8 x 16 x 8 inches
edition of 3 + 1 AP



Matt Lynch
Block Battery, 2001
concrete, cables
16 x 8 x 8 inches
edition of 3 + 1 AP
courtesy: private collection



Matt Lynch
Block Alphabet, 2001
 concrete
 3 blocks, each- 16 x 8 x 8 inches
 edition of 3 + 1 AP out of an edition of the whole alphabet



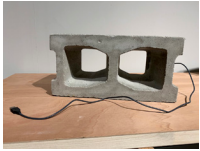
Matt Lynch
Blocked Thought, 2001
 concrete
 3 blocks, each- 16 x 8 x 8 inches
 1 out of an edition of 3 + 1 AP
 courtesy: private collection



Matt Lynch
Love, 2001
 painted concrete
 16 x 16 x 8 inches
 2 out of an edition of 3 + 1 AP
 courtesy: private collection



Matt Lynch
Alcindor Block (Home), 2014
 painted concrete
 8 x 16 x 8 inches
 edition of 3 + 1 AP
 courtesy: private collection



Matt Lynch
Gigablock, 2002
 concrete, USB cord
 8 x 16 x 8 inches
 edition of 3 + 1 AP



lobby
 Matt Lynch
Block Radio, 2001
 concrete
 16 x 32 x 8 inches
 1 out of an edition of 3 + 1 AP
 courtesy: private collection



Matt Lynch
Computer, 2001
 concrete- monitor, hard drive, keyboard, mouse
 overall dimensions variable
 edition of 3 + 1 AP



lobby entrance
 SIMPARCH
Model for Independent Truck, 2011
 steel, aluminum, hardware, wood, stucco, fan
 72 x 24 x 24 inches



Matt Lynch
Like A Rock, 2001
 concrete
 8 x 16 x 8 inches
 edition of 3 + 1 AP
 courtesy: private collection



rooftop deck
 Matt Lynch
Carapace (VW Beetle), 2019
 from a pattern by Wong Hidayat, fiberglass
 56 x 168 x 62 inches



Matt Lynch
Rice Kripsy Block, 2001
 Rice Kripsys, butter, marshmallows
 8 x 16 x 8 inches
 edition of 3 + 1 AP

This exhibition is presented by The Summit, A Dolce Hotel by Wyndham and organized by Alternate Projects. Matt Lynch and Curtis Goldstein's work is presented courtesy of the artist unless otherwise noted.



Matt Lynch
6 Pack Lego, 2002
 concrete, 6 cans of beer
 8 x 16 x 8 inches
 edition of 3 + 1 AP



Matt Lynch
Block and Tackle, 2001
 concrete, metal tackle box
 16 x 16 x 8 inches
 edition of 3 + 1 AP



THE SUMMIT
 A Dolce Hotel

All artwork is available for purchase unless otherwise noted.
A checklist with prices is available at the front desk. For more information contact:



Alternate Projects
 859 653 8684
 info@alternateprojects.net
 alternateprojects.net